



Location pre-spotted by Film France network

Geolocation

N°86342

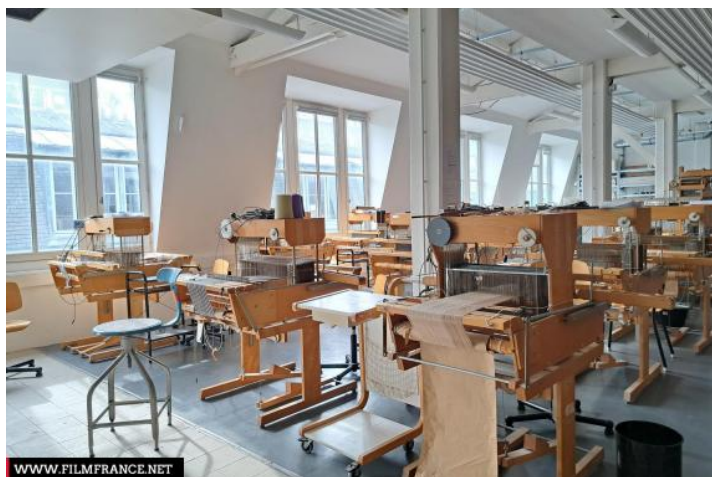
Location linked to [ENSCI - Global information](#)
updated: 12/31/2024

ENSCI - Textile workshops

**75011 Paris
France**

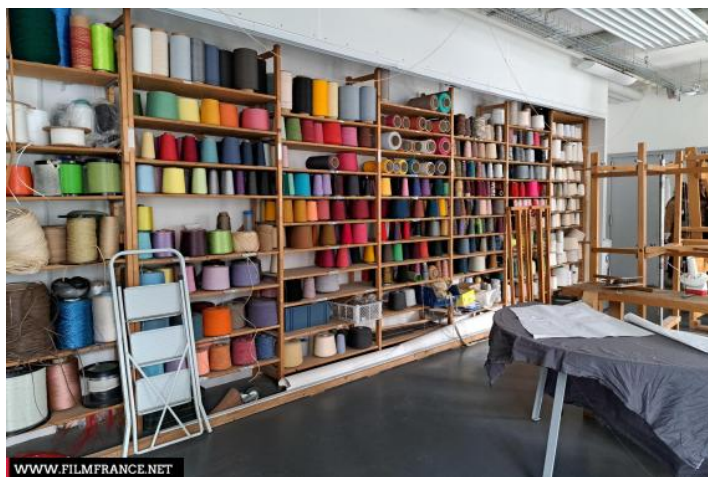
Contact the commission

[Film Paris Region, Ile-de-France Film Commission](#)



WWW.FILMFRANCE.NET

Credits: Film Paris Region
Caption: Ateliers Textile



WWW.FILMFRANCE.NET

Credits: Film Paris Region
Caption: Ateliers Textile



WWW.FILMFRANCE.NET

Credits: Film Paris Region
Caption: Ateliers Textile



WWW.FILMFRANCE.NET

Credits: Film Paris Region
Caption: Ateliers Textile



WWW.FILMFRANCE.NET

Credits: Film Paris Region
Caption: Ateliers Textile

LOCATION TYPE

CATEGORIES

Workshop

Education - research building

ENVIRONMENT

City

GENERAL PRESENTATION

Since its creation in 1982, the École Nationale Supérieure de Création Industrielle (ENSCI-Les Ateliers) has been dedicated to industrial creation and design.

It is placed under the dual authority of the Ministries of Culture and Industry, and enjoys first-rate national and international recognition and integration.

It is ranked as world's leading French art and design school by the QS World University Rankings.

LOCATION CONDITION TYPE

Well maintained

LOCATION HISTORY

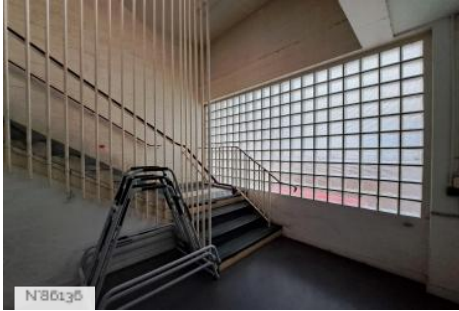
Built in 1922, it housed until 1979 the technical premises of the famous Dutch decorator Jansen, who had his store on Rue Royale. A veritable "artisan city" employing 500 craftsmen, cabinetmakers, upholsterers, locksmiths, gilders, staffers, sculptors and painters." The Ministry of Culture acquired the building to house the school and refurbished it.

Les Ateliers occupies a historic site on the site of the former workshops of decorator Jansen. The school has kept the spirit of these workshops, while opening up to the most contemporary technologies (digital machines, 3D printers and scanners...).

CONSTRUCTION PERIOD

1921-1930, 1981-1990

Sibling locations



ENSCI - Circulations



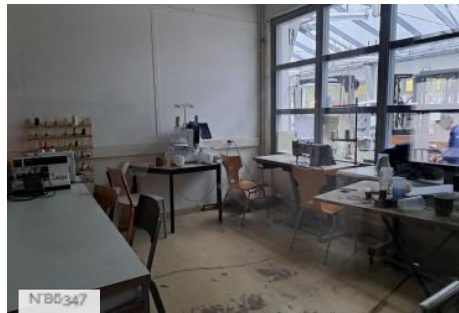
ENSCI - Richard Lenoir room



ENSCI - Open space and offices



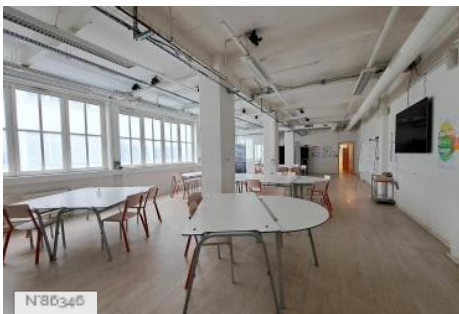
ENSCI - Terrace and outdoors



ENSCI - Model and digital workshops



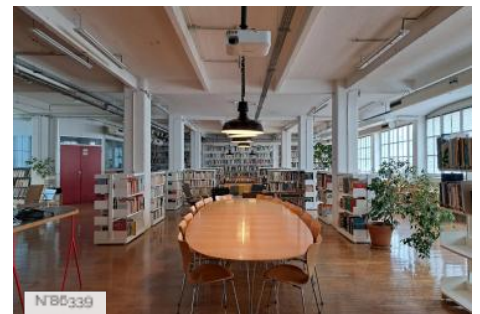
ENSCI - Charlotte Perriand room



ENSCI - Classrooms



ENSCI - Courtyard - Glass roof



ENSCI - Library