



Location pre-spotted by Film France network

Geolocation

N°83110

Location linked to [Monnaie de Paris - Global Information](#)
updated: 05/17/2023

Monnaie de Paris - Lounge

**75006 Paris
France**

Contact the commission

[Film Paris Region, Ile-de-France Film Commission](#)



WWW.FILMFRANCE.NET

Credits: Film Paris Region - Luc Detours
Caption: Monnaie de Paris - Salon des arts du monde



WWW.FILMFRANCE.NET

Credits: Film Paris Region - Luc Detours
Caption: Monnaie de Paris - Salon des arts du monde



WWW.FILMFRANCE.NET

Credits: Film Paris Region - Luc Detours
Caption: Monnaie de Paris - Salon des arts du monde



WWW.FILMFRANCE.NET

Credits: Film Paris Region - Luc Detours
Caption: Monnaie de Paris - Salon des arts du monde



WWW.FILMFRANCE.NET

Credits: Film Paris Region - Luc Detours
Caption: Monnaie de Paris - Salon des arts du monde

LOCATION TYPE

CATEGORIES

Room Drawing room

ENVIRONMENT

City

GENERAL PRESENTATION

LOCATION CONDITION TYPE

Well maintained

LOCATION HISTORY

The Monnaie de Paris was created on June 25, 864 by the Edict of Pitres of Charles II the Bald: it is the oldest French institution and also one of the oldest companies in the world still in operation. The promulgation of the Edict of Pitres created a monetary workshop in Paris attached to the Crown, in addition to eight other workshops in the provinces. The only workshop in France to produce without interruption since its creation, the Parisian workshop will impose itself during the Old Regime as the first of the kingdom. The building of the Monnaie de Paris was completed in 1775, under the reign of Louis XV. Its architect, Jacques-Denis Antoine, was directly inspired by ancient architectural forms to create a building with a neoclassical architectural style.

At the end of September 2017, the Monnaie de Paris reopened after renovation work: 80% of the 1.2 ha of buildings is now accessible to the public.

2,000 pieces (out of the reserves that include a total of 170,000 objects), never before exhibited (rare medals and coins, ingots recovered from a wreck, etc.), are presented in the museum dedicated to the Institution's know-how.

CONSTRUCTION PERIOD

XVIIIth Century

DOMINANT STYLE

Louis XVI, Néo-classique

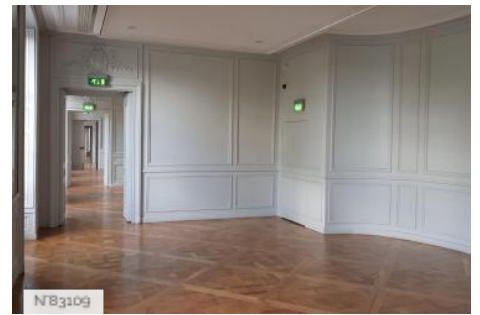
Sibling locations



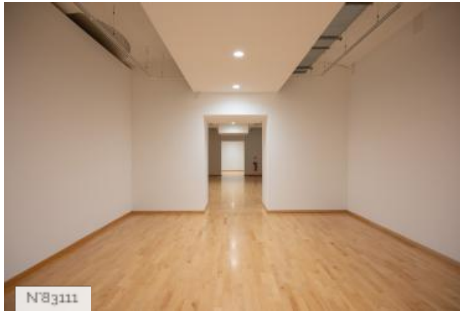
Monnaie de Paris - Staircase of Honor



Monnaie de Paris - Hall of Honor



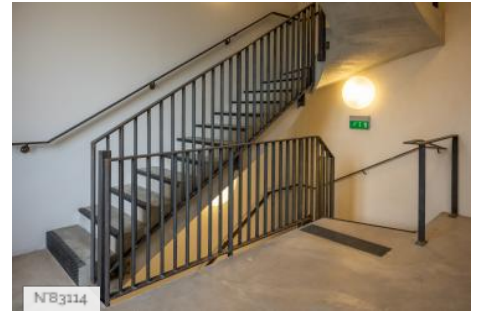
Monnaie de Paris - Row of salons on the Seine



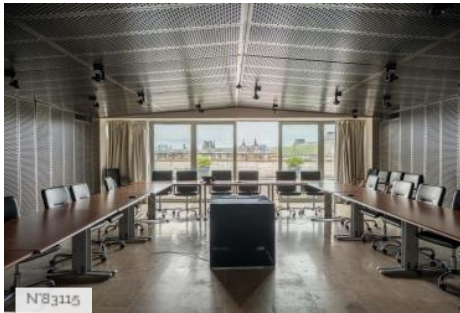
Monnaie de Paris - "La Méridienne" Exhibition Gallery



Monnaie de Paris - Court of Honor



Monnaie de Paris - Modern stairs



Monnaie de Paris - Meeting room



Monnaie de Paris - Terrace



Monnaie de Paris - Roofs



Monnaie de Paris - Futuristic restrooms



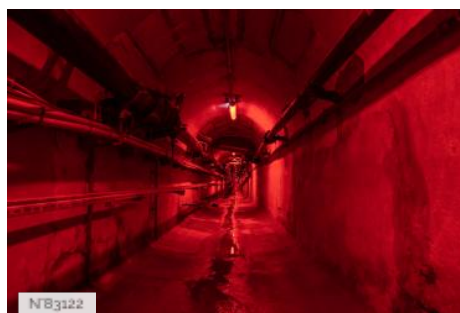
Monnaie de Paris - enfilade of courtyards



Monnaie de Paris - Meridian court



Monnaie de Paris - Mansart court



Monnaie de Paris - Underground tunnel



Monnaie de Paris - Remises Court