



Location pre-spotted by Film France network

Geolocation

N°83050

Location linked to [CentraleSupélec - Bouygues building](#)

- [Global card](#)

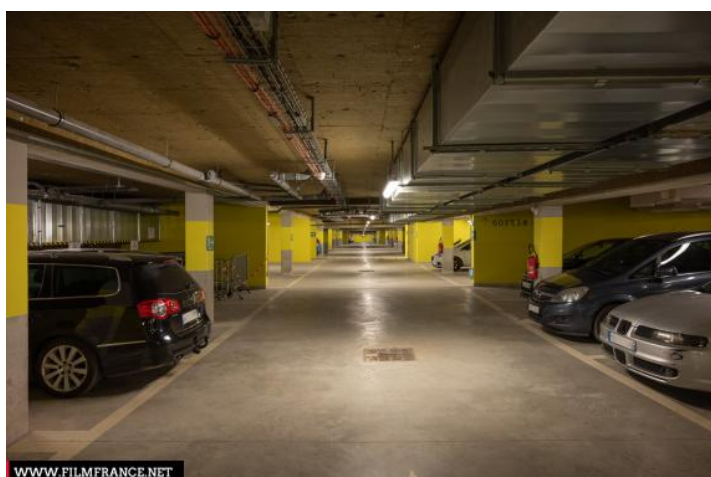
updated: 05/05/2023

CentraleSupélec - Bouygues building - underground parking

**91 190 Gif-sur-Yvette
France**

Contact the commission

[Film Paris Region, Ile-de-France Film Commission](#)



WWW.FILMFRANCE.NET

Credits: Film Paris Region - Luc Detours
Caption: Centralesupelec - Parking souterrain



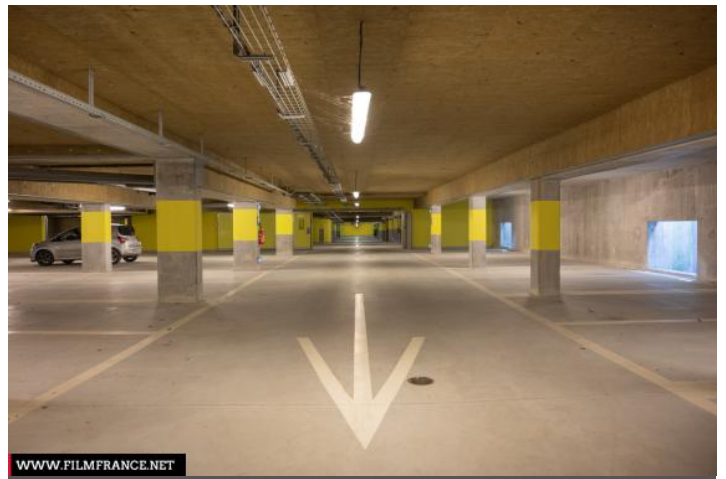
WWW.FILMFRANCE.NET

Credits: Film Paris Region - Luc Detours
Caption: Centralesupelec - Parking souterrain



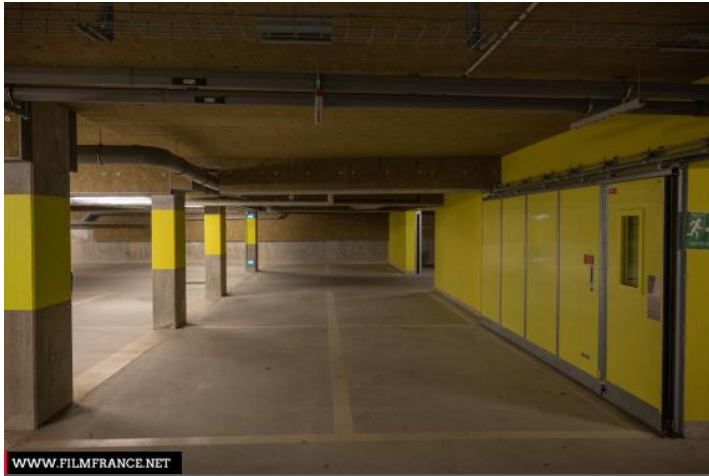
WWW.FILMFRANCE.NET

Credits: Film Paris Region - Luc Detours
Caption: Centralesupelec - Parking souterrain



WWW.FILMFRANCE.NET

Credits: Film Paris Region - Luc Detours
Caption: Centralesupelec - Parking souterrain



WWW.FILMFRANCE.NET

Credits: Film Paris Region - Luc Detours
Caption: Centralesupelec - Parking souterrain

LOCATION TYPE

CATEGORIES

Parking lot Underground Underground

ENVIRONMENT

City

GENERAL PRESENTATION

CentraleSupélec is a public institution of a scientific, cultural and professional nature offering engineering courses, masters, specialized masters and doctorates.

This Grande Ecole is under the joint supervision of the Ministry of Higher Education, Research and Innovation and the Ministry of the Economy, Industry and the Digital Economy.

It is located on three sites: the historic Louis Charles Breguet building (1970s) and the modern Gustave Eiffel and Francis Bouygues buildings.

LOCATION CONDITION TYPE

Perfect condition

LOCATION HISTORY

The large institution "Centralesupelec" was born from the merger at the end of 2014 of École Centrale Paris and Ecole Supélec . It became part of the Université Paris-Saclay and moved to the Saclay plateau (Gif-sur-Yvette) in 2017. The two new buildings, Gustave Eiffel and Francis Bouygues, were inaugurated the same year.

CONSTRUCTION PERIOD

The Bouygues building was designed by the Gigon/Guyer architectural firm.
2011-2020

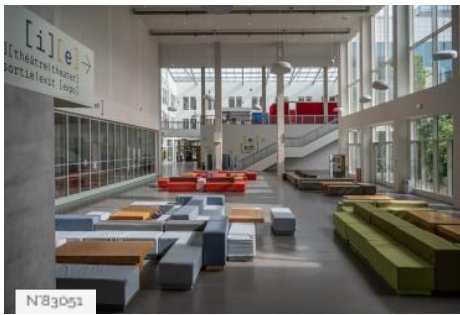
DOMINANT STYLE

Contemporary

MATERIALS

Interior walls : Concrete - Cement - Breezeblock, Interior floor : Concrete - Cement - Breezeblock

Sibling locations



CentraleSupélec - Bouygues building - Hall



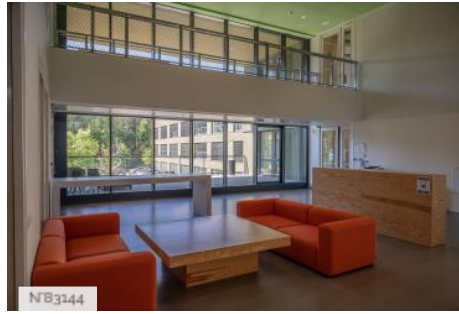
CentraleSupélec - Bouygues building - Glade



CentraleSupélec - Bouygues building - Patio Vegetal



CentraleSupélec - Bouygues Building - Theater



CentraleSupélec - Bouygues Building - Workspace



CentraleSupélec - Bouygues Building - Social room



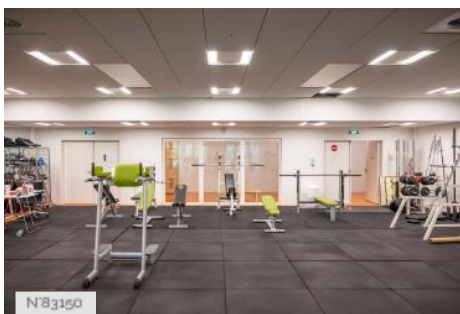
CentraleSupélec - Bouygues Building - Multi-sport gymnasium



CentraleSupélec - Bouygues Building - Dojo



CentraleSupélec - Bouygues Building - Multipurpose Room



CentraleSupélec - Bouygues Building - Weight room



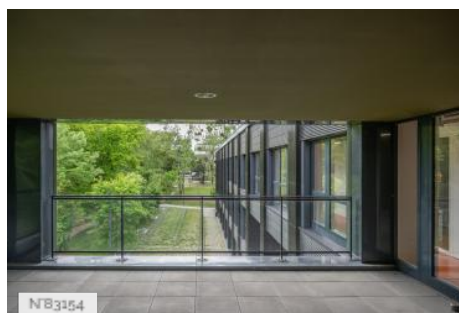
CentraleSupélec - Bouygues Building - Collaborative space



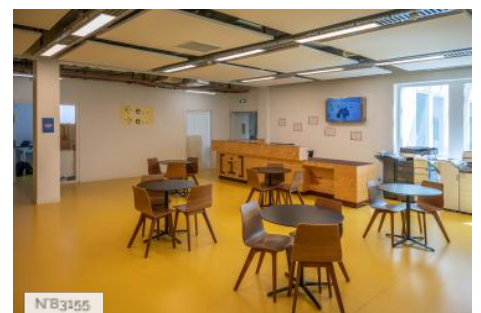
CentraleSupélec - Bouygues Building - Great Hall



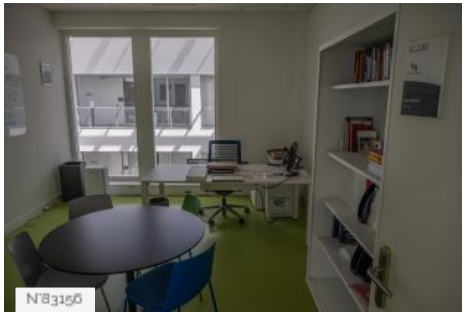
CentraleSupélec - Bouygues Building - Computer rooms



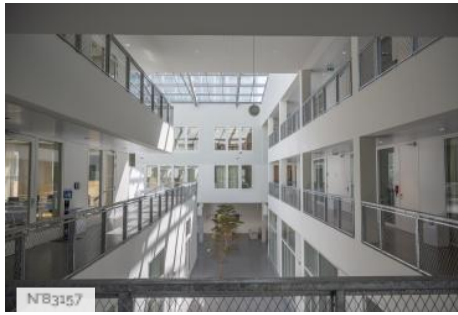
CentraleSupélec - Bouygues Building - Terraces



CentraleSupélec - Bouygues Building - Reception rooms



CentraleSupélec - Bouygues Building -
Administrative office



CentraleSupélec - Bouygues building - Interior
corridors



CentraleSupélec - Bouygues Building -
Classrooms