

Location pre-spotted by Film France network

Geolocation

N°82725

Location linked to [Domain and Castle of Aunoy - Global card](#)

updated: 05/04/2023

Domain and Castle of Aunoy - Rustic kitchen

**77720 Champeaux
France**

Contact the commission

[Film Paris Region, Ile-de-France Film Commission](#)



WWW.FILMFRANCE.NET

Credits: Film Paris Region - Luc Detours

Caption: Domaine et Château d'Aunoy - Cuisine rustique



WWW.FILMFRANCE.NET

Credits: Film Paris Region - Luc Detours

Caption: Domaine et Château d'Aunoy - Cuisine rustique



WWW.FILMFRANCE.NET

Credits: Film Paris Region - Luc Detours
Caption: Domaine et Château d'Aunoy - Cuisine rustique



WWW.FILMFRANCE.NET

Credits: Film Paris Region - Luc Detours
Caption: Domaine et Château d'Aunoy - Cuisine rustique

LOCATION TYPE

CATEGORIES

Castle Kitchen Estate

ENVIRONMENT

Countryside, Village

GENERAL PRESENTATION

LOCATION CONDITION TYPE

Well maintained

LOCATION HISTORY

The lordship of Aunoy is known since the 12th century. A previous medieval building was destroyed by fire around 1750. Its owner at the time, Jean-Baptiste Chabert, took advantage of this to completely remodel the estate. He moved the dwelling further west, and kept only a few feudal signs such as the dovecote and two turrets. The new residence was in the form of a Parisian mansion adapted for the countryside, a form that became classic in the mid-18th century.

To avoid a new fire, the new construction uses Catalan or Saracen vaults which allow to exclude wood (no construction wood, not even for the frame) but requires walls of more than 2 meters thick. This process was popularized in France by the writings of d'Espie and Tavenot and spread in the 1760's. Its application to the Château d'Aunoy is a precursory and particularly advanced case.

In 1761, one of the first English-style parks in France was laid out around the castle.

The castle, its main courtyard, its moat, the outbuildings, the walls, the gates and the park have been listed as Historical Monuments since 1986.

CONSTRUCTION PERIOD

XVIIIth Century

DOMINANT STYLE

XVIII Siècle

MATERIALS

Interior walls : Wallpaper, Interior floor : Red hexagonal tile - Terracotta

Sibling locations



N82700

Domain and Castle of Aunoy - abandoned house



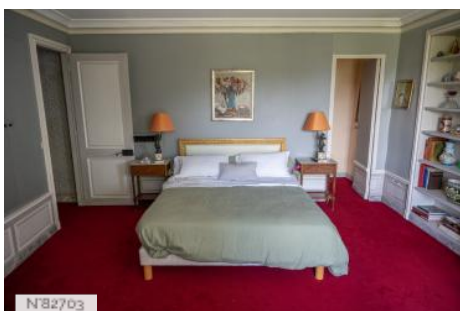
N82701

Domain and Castle of Aunoy - Terraces



N82702

Domain and Castle of Aunoy - Suite



N82703

Domain and Castle of Aunoy - Suite



N82704

Domain and Castle of Aunoy - Suite



N82705

Domain and Castle of Aunoy - Suite

Domain and Castle of Aunoy - Rooms

Domain and Castle of Aunoy - Commons Wing

Domain and Castle of Aunoy - Former rooms of the Commons



Domain and Castle of Aunoy - Old Orangery



Domain and Castle of Aunoy - Greenhouse



Domain and Castle of Aunoy - Vegetable garden and rose garden



Domain and Castle of Aunoy - Winter Apartments



Domain and Castle of Aunoy - Dining room



Domain and Castle of Aunoy - Great hall



Domain and Castle of Aunoy - Pink lounge