

Location pre-spotted by Film France network

Geolocation

N°82155
updated: 07/20/2022

City of Evry- Courcouronnes

91000 Évry-Courcouronnes
France

Contact the commission

[Film Paris Region, Ile-de-France Film Commission](#)



WWW.FILMFRANCE.NET

Credits: Ville d'Evry-Courcouronnes
Caption: Ville d'Evry-Courcouronnes - Place des Droits de l'Homme



WWW.FILMFRANCE.NET

Credits: Ville d'Evry-Courcouronnes
Caption: Ville d'Evry-Courcouronnes - Parc Coquibus



WWW.FILMFRANCE.NET

Credits: Ville d'Evry-Courcouronnes
Caption: Ville d'Evry-Courcouronnes - Quartier du Village



WWW.FILMFRANCE.NET

Credits: Ville d'Evry-Courcouronnes
Caption: Ville d'Evry-Courcouronnes - Quartier des Pyramides



WWW.FILMFRANCE.NET

Credits: Ville d'Evry-Courcouronnes
Caption: Ville d'Evry-Courcouronnes - Quartier des Epinettes

LOCATION TYPE

CATEGORIES

City

ENVIRONMENT

City

GENERAL PRESENTATION

The city of Evry-Courcouronnes is the prefecture of the Essonne department. Formerly a "new town", its architecture is mainly modern and historically linked to its rapid urbanization.

LOCATION HISTORY

At the end of the 1950s, Evry and Courcouronnes were two sparsely populated agricultural villages. Following the development and urban planning scheme for new towns entrusted to Paul Delouvrier, a new agglomeration linking the neighboring towns of Evry, Courcouronnes, Bondoufle, and Lisses was born in 1969.

Over the next thirty years, the new town, which had become a prefecture, rapidly urbanized and became denser. It benefits from an architectural diversity where some vestiges of a medieval architecture are mixed with large groups of modern brick and concrete buildings. Industrial zones rub shoulders with numerous housing districts, from low-cost housing to suburban and tree-lined areas, not to mention the pyramid-shaped housing emblematic of the city and its urban planning ambitions.

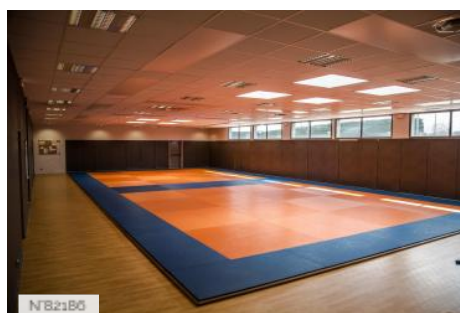
In 2001, the status of new town was abandoned. Evry and Courcouronnes will merge in 2019 to become a single city.
1961-1970, 1971-1980

CONSTRUCTION PERIOD

Related locations



N82177



N82183



N82185

City of Evry-Courcouronnes - Lake Sports Complex
- Global card



City of Evry-Courcouronnes - Lake sports complex
- Natural grass field

City of Evry-Courcouronnes - Lake sports complex
- Dojo



City of Evry-Courcouronnes - Lake sports complex
- Boiler room

City of Evry-Courcouronnes - Lake sports complex
- Artificial turf field



City of Evry-Courcouronnes - Lake sports complex
- Outdoor bleachers



City of Evry-Courcouronnes - Lake sports complex
- Terrace



City of Evry-Courcouronnes - Lake sports complex
- Multi-sports gym



City of Evry-Courcouronnes - Lake sports complex
- Corridor and changing rooms



City of Evry-Courcouronnes - Lake sports complex
- Entrance hall



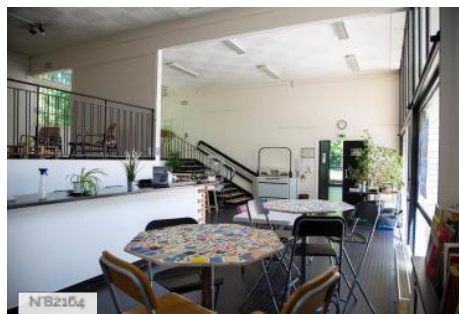
City of Evry-Courcouronnes - Annex town hall
- Reception and lobby



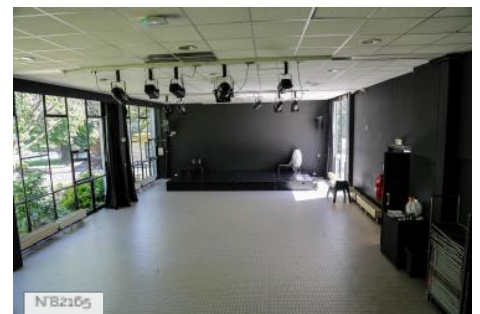
City of Evry-Courcouronnes - Annex town hall
- Room



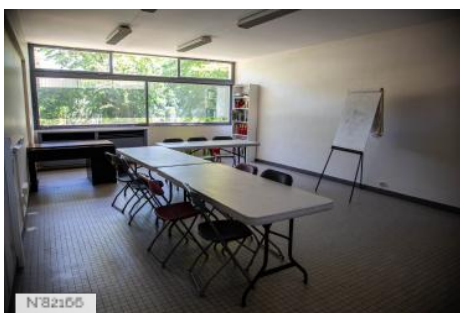
City of Evry-Courcouronnes - Community center
- Global card



City of Evry-Courcouronnes - Community center
- Foyer



Ville d'Evry-Courcouronnes - Community center
- Performance hall



City of Evry-Courcouronnes - Community center
- Rooms