



Location pre-spotted by Film France network

Geolocation

N°81893

updated: 06/18/2021

Petit Lourdes

**14200 Hérouville Saint-Clair
France**

Contact the commission

**Normandy Film Commission - locations of Calvados and
Manche**

✉ | ☎ +33 (0)2 31 06 23 23



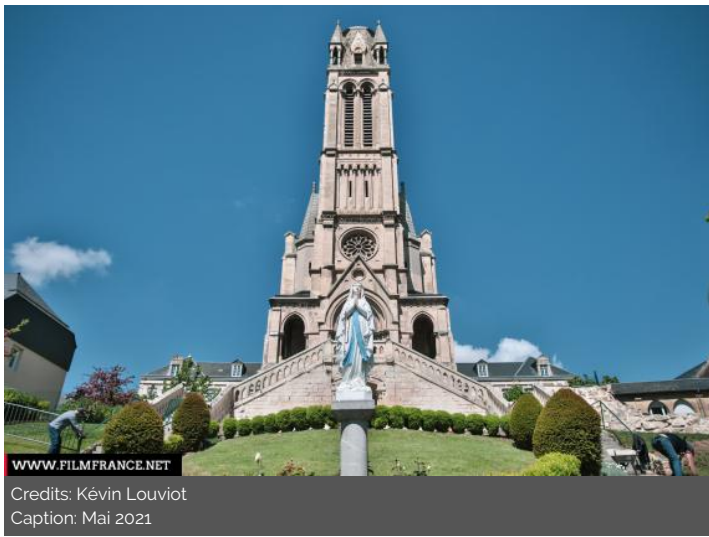
WWW.FILMFRANCE.NET

Credits: Kévin Louviot
Caption: Mai 2021



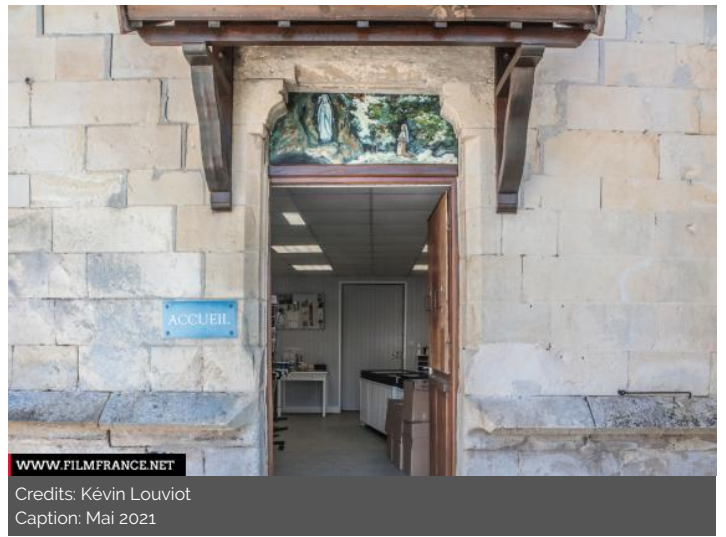
WWW.FILMFRANCE.NET

Credits: Kévin Louviot
Caption: Mai 2021



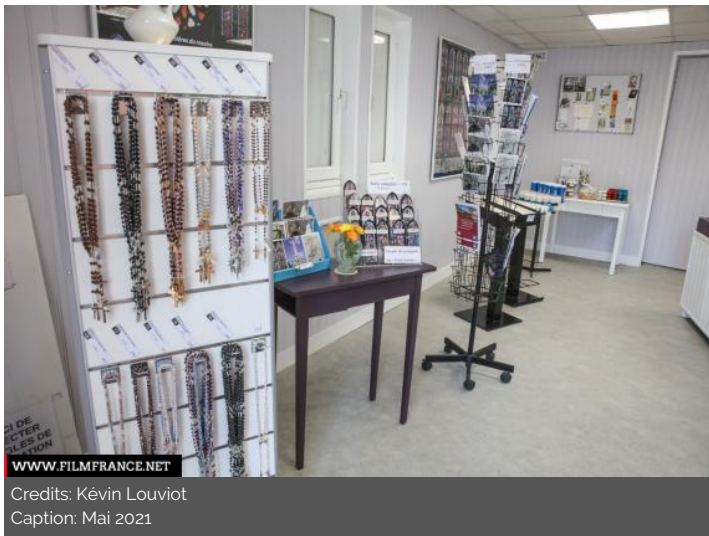
WWW.FILMFRANCE.NET

Credits: Kévin Louviot
Caption: Mai 2021



WWW.FILMFRANCE.NET

Credits: Kévin Louviot
Caption: Mai 2021



WWW.FILMFRANCE.NET

Credits: Kévin Louviot
Caption: Mai 2021

LOCATION TYPE

CATEGORIES

Shop Chapel Crypt Church Cave Garden Religious site

ENVIRONMENT

Park or garden

GENERAL PRESENTATION

LOCATION CONDITION TYPE

Well maintained

LOCATION HISTORY

En 1879 un négociant en vins originaire de Rouen fit, à la suite de la « guérison miraculeuse de sa femme » lors de son séjour à Lourdes, une donation à condition que soit construit une réplique de la chapelle du lieu sacré. Ce fut chose faite à Hérouville Saint Clair en 1882, depuis Le Petit Lourdes accueille pèlerins et visiteurs.

CONSTRUCTION PERIOD

XIXth Century

DOMINANT STYLE

Gothic

REMARKABLE ARCHITECTURAL

Balcony, Bas-reliefs, Column, Stairs (monumental), Stairs, Porch, Portal, Statue, Tower, Stained-glass windows

ELEMENTS

MATERIALS

Tiles, Natural location : Chalk - Limestone, Building front : Freestone - Limestone - Chalk, Building front : Glass - Stained-glass, Interior walls : Stone, Interior walls : Glass - Stained-glass, Stone, Freestone - Limestone - Chalk, Interior ceiling : Vaulted - Arched, interior floor : Wooden floor, Building roof : Slate, Glass - Stained-glass