



Location pre-spotted by Film France network

Geolocation

N°67125

updated: 08/17/2011

Nanterre Law Court - Assizes courtroom 2

92000 Nanterre
France

Contact the commission

[Film Paris Region, Ile-de-France Film Commission](#)



WWW.FILMFRANCE.NET

Credits: Commission du Film IDF-E.Grebille
Caption:



WWW.FILMFRANCE.NET

Credits: Commission du Film IDF-E.Grebille
Caption:



WWW.FILMFRANCE.NET

Credits: Commission du Film IDF-E.Grebille
Caption:



WWW.FILMFRANCE.NET

Credits: Commission du Film IDF-E.Grebille
Caption:



WWW.FILMFRANCE.NET

Credits: Commission du Film IDF-E.Grebille
Caption:

LOCATION TYPE

CATEGORIES

Tribunal Court Judicial center Judicial establishment Judicial edifice Judicial building Judicial complex
Judicial site

ENVIRONMENT

City

GENERAL PRESENTATION

LOCATION CONDITION TYPE

Well maintained

LOCATION HISTORY

Law court of the city of Nanterre situated in the suburbs of Paris. It was built during the 70's.

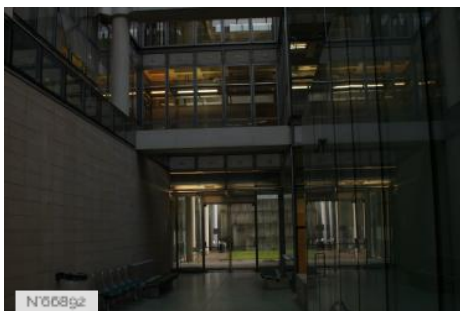
CONSTRUCTION PERIOD

1971-1980

DOMINANT STYLE

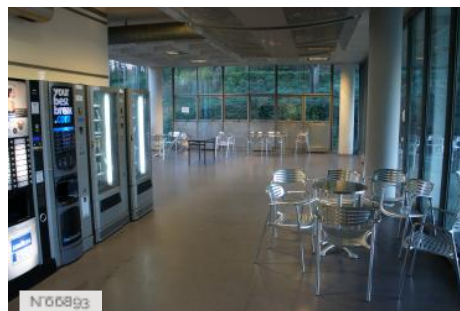
Contemporary

Related locations



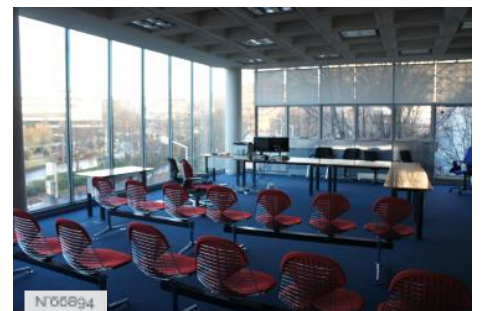
N06892

Nanterre Law Court 2nd building- Corridors



N06893

Nanterre Law Court 2nd building- Cafeteria



N06894

Nanterre Law Court 2nd building- 2.03 Room



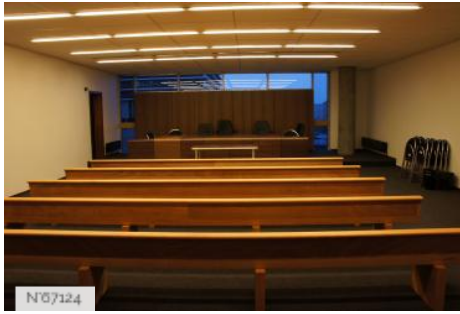
Nanterre Law Court 2nd building- Courtroom A



Nanterre Law Court 2nd building- Lobby



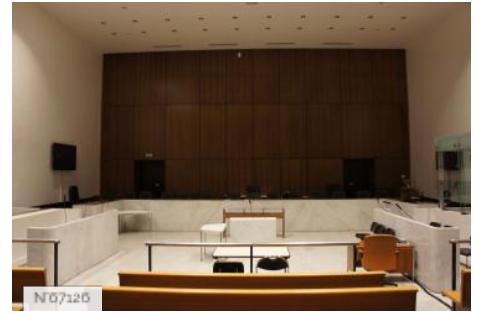
Nanterre Law Court - Meeting rooms



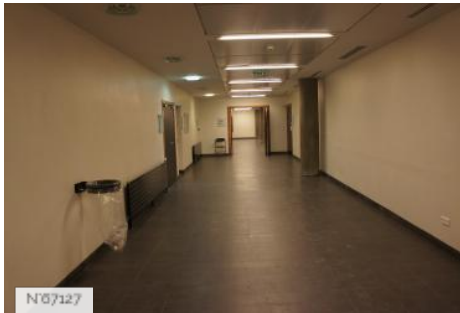
Nanterre Law Court - courtroom 112



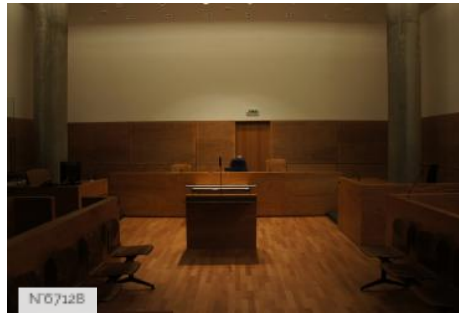
Nanterre Law Court - Assizes courtroom 2



Nanterre Law Court - Assizes courtroom 1



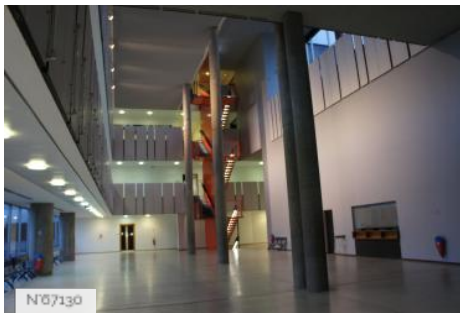
Nanterre Law Court - Hall 1st floor



Nanterre Law Court - courtroom C



Nanterre Law Court - courtrooms



Nanterre Law Court - Hall