



Location pre-spotted by Film France network

Geolocation

N°67093

updated: 09/07/2011

City of Saint-Witz -  
Leonardo da Vinci  
highschool/Global  
information

95470 St Witz  
France

Contact the commission

Film Paris Region, Ile-de-France Film Commission



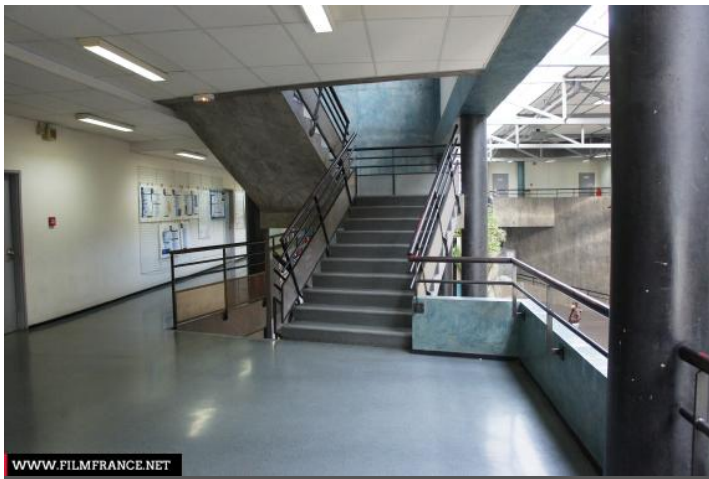
WWW.FILMFRANCE.NET

Credits: Commission du Film IDF-E.Grebille  
Caption:



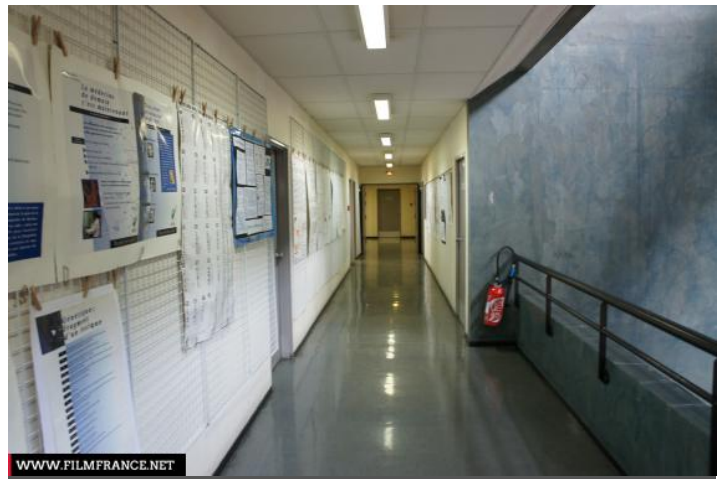
WWW.FILMFRANCE.NET

Credits: Commission du Film IDF-E.Grebille  
Caption:



WWW.FILMFRANCE.NET

Credits: Commission du Film IDF-E.Grebille  
Caption:



WWW.FILMFRANCE.NET

Credits: Commission du Film IDF-E.Grebille  
Caption:



WWW.FILMFRANCE.NET

Credits: Commission du Film IDF-E.Grebille  
Caption:

## LOCATION TYPE

### CATEGORIES

Corridor Room Education - research edifice Education - research center High school Junior high school  
Meeting room Education - research site Education - research building Research laboratory  
Education - research complex

### ENVIRONMENT

Countryside, Village

## GENERAL PRESENTATION

### LOCATION CONDITION TYPE

Well maintained

### LOCATION HISTORY

Saint Witz Highschool welcomes more than 600 students in a pleasant building where they prepare the baccalauréats.

### CONSTRUCTION PERIOD

1991-2000

## Related locations



City of Saint-Witz - Leonardo da Vinci highschool/Global information



City of Saint-Witz - Leonardo da Vinci highschool/Principal's office



City of Saint-Witz - Leonardo da Vinci highschool/Function room



City of Saint-Witz - Leonardo da Vinci highschool/Teachers room



City of Saint-Witz - Leonardo da Vinci highschool/Chemistry room



City of Saint-Witz - Leonardo da Vinci highschool/Room A23



City of Saint-Witz - Leonardo da Vinci highschool/hall



City of Saint-Witz - Jeanne du Chesne school