



Location pre-spotted by Film France network

Geolocation

N°78324

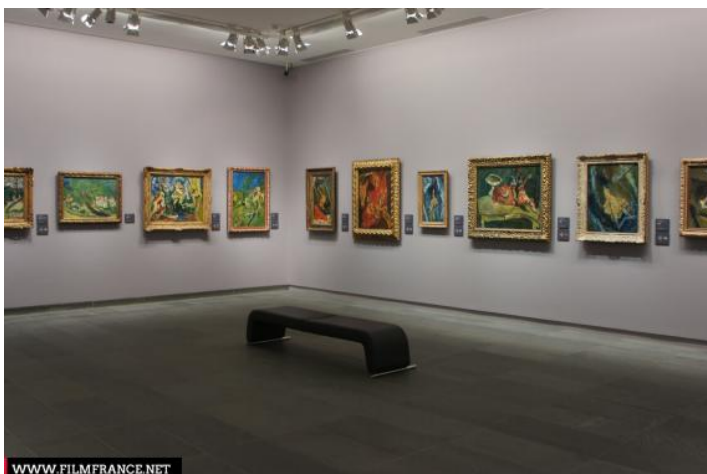
updated: 10/05/2016

Musée de l'Orangerie - Exhibition Rooms

**75001 Paris
France**

Contact the commission

Film Paris Region, Ile-de-France Film Commission



WWW.FILMFRANCE.NET

Credits: Commission du film d'Ile de France
Caption: Musée de l'Orangerie - Showrooms



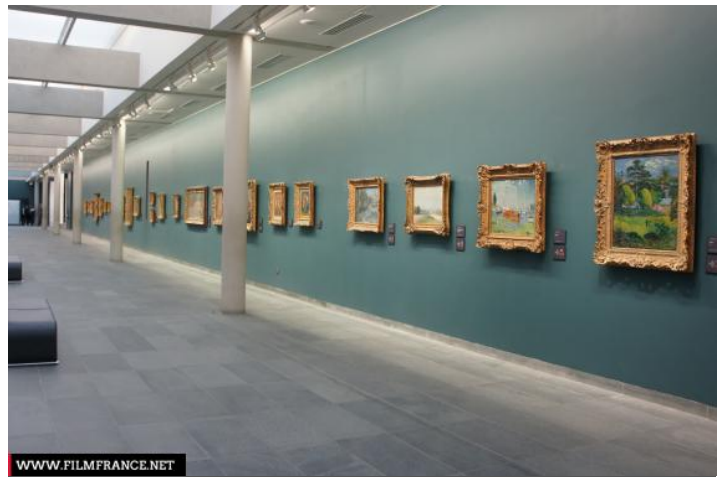
WWW.FILMFRANCE.NET

Credits: Commission du film d'Ile de France
Caption: Musée de l'Orangerie - Showrooms



WWW.FILMFRANCE.NET

Credits: Commission du film d'Ile de France
Caption: Musée de l'Orangerie - Showrooms



WWW.FILMFRANCE.NET

Credits: Commission du film d'Ile de France
Caption: Musée de l'Orangerie - Showrooms



WWW.FILMFRANCE.NET

Credits: Commission du film d'Ile de France
Caption: Musée de l'Orangerie - Showrooms

LOCATION TYPE

CATEGORIES

Corridor Room Cultural site Cultural edifice Art museum Cultural establishment

ENVIRONMENT

City

GENERAL PRESENTATION

LOCATION CONDITION TYPE

Well maintained

LOCATION HISTORY

Located in the heart of Paris, in the Tuileries Gardens, two exceptional collections are on display in the Musée de l'Orangerie : Claude Monet's Waterlilies and the Walter Guillaume collection, which brings together masterpieces by Renoir, Cézanne, Modigliani, Matisse and Picasso, among others, and is a magnificent illustration of modern art from 1870 to 1936.

CONSTRUCTION PERIOD

XIXth Century

Related locations



Musée de l'Orangerie - Toilet



Musée de l'Orangerie - attic / machine room



Musée de l'Orangerie - Backstairs\backstairs



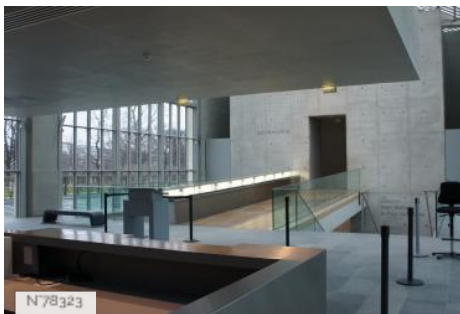
Musée de l'Orangerie - Water Lilies Rooms



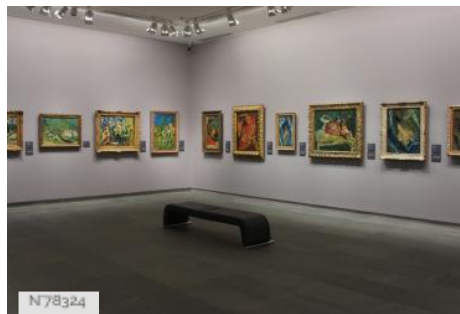
Musée de l'Orangerie - Educational Room\neducational room\neducational



Musée de l'Orangerie - Lobby



Musée de l'Orangerie - Glass roof Space



Musée de l'Orangerie - Exhibition Rooms



Musée de l'Orangerie - Auditorium



Musée de l'Orangerie - Global index