

Location pre-spotted by Film France network

Geolocation

N°62036

Location linked to [Military Fort of Marly - Global information](#)

updated: 11/07/2023

Military Fort of Marly - Around the fort

78160 Marly-Le-Roi
France

Contact the commission

[Film Paris Region, Ile-de-France Film Commission](#)



WWW.FILMFRANCE.NET

Credits: Commission du Film IDF
Caption:



WWW.FILMFRANCE.NET

Credits: Commission du Film IDF
Caption:



WWW.FILMFRANCE.NET

Credits: Commission du Film IDF
Caption:



WWW.FILMFRANCE.NET

Credits: Commission du Film IDF
Caption:



WWW.FILMFRANCE.NET

Credits: Commission du Film IDF
Caption:

LOCATION TYPE

CATEGORIES

Lane Field Park Forest Grazing

ENVIRONMENT

Countryside

GENERAL PRESENTATION

LOCATION HISTORY

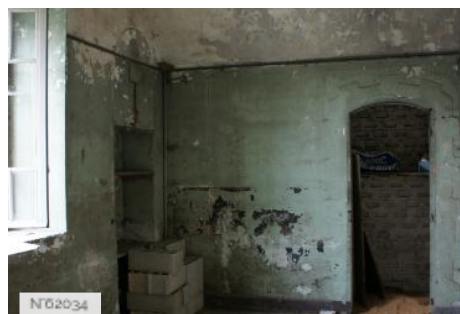
The Fort is one of the fortifications of Paris built between 1878 and 1881 for a garrison of 800 men. It was termed a réduit for its position surrounded by several smaller batteries. The fort was occupied by the Germans during World War II, who blew up their ammunition when they evacuated the fort in August 1944, damaging the fort.

Sibling locations



N02033

Military Fort of Marly - Officers barrack buildings



N02034

Military Fort of Marly - Troops barrack buildings



N02035

Military Fort of Marly - Exteriors

Related locations



Military Fort of Marly - Officers barrack buildings



Military Fort of Marly - Troops barrack buildings



Military Fort of Marly - Exteriors



Military Fort of Marly - Around the fort