



Location pre-spotted by Film France network

Geolocation

N°61845

Location linked to [Saint Philippe Educational village - Global Information](#)

updated: 12/23/2021

## Saint Philippe Educationnal village - Rodin Hall

**92190 Meudon  
France**

Contact the commission

[Film Paris Region, Ile-de-France Film Commission](#)



WWW.FILMFRANCE.NET

Credits: Film Paris Region - Luc Detours

Caption: Village éducatif Saint-Philippe - Salle de jeu Rodin



WWW.FILMFRANCE.NET

Credits: Film Paris Region - Luc Detours

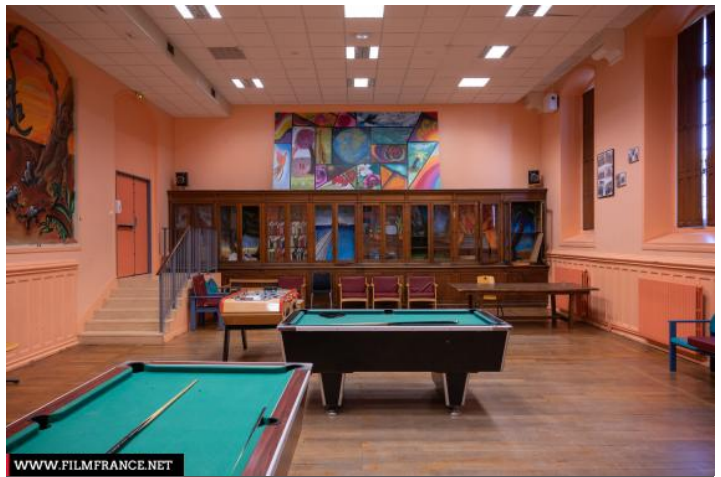
Caption: Village éducatif Saint-Philippe - Salle de jeu Rodin



WWW.FILMFRANCE.NET

Credits: Film Paris Region - Luc Detours

Caption: Village éducatif Saint-Philippe - Salle de jeu Rodin



WWW.FILMFRANCE.NET

Credits: Film Paris Region - Luc Detours

Caption: Village éducatif Saint-Philippe - Salle de jeu Rodin



WWW.FILMFRANCE.NET

Credits: Film Paris Region - Luc Detours

Caption: Village éducatif Saint-Philippe - Salle de jeu Rodin

## LOCATION TYPE

### CATEGORIES

Education - research building

Education - research center

School

Professional school

Education - research edifice

Education - research complex

Educational establishment

Foyer

Room

Gaming resort

Reception hall

Meeting room

Drawing room

Education - research site

### ENVIRONMENT

Park or garden, City

## GENERAL PRESENTATION

### LOCATION CONDITION TYPE

Well maintained

### LOCATION HISTORY

The Saint Philippe Orphanage and the Saint Paul Retirement Home were built on the same site in Meudon by the Duchesse de Galliera and inaugurated on November 3, 1888.

The site was transformed into a French military hospital during the First World War, treating 7,000 wounded.

In 1946, the Apprentis d'Auteuil took over official management, and in 1970, the two sites were separated.

The former orphanage became the Village éducatif Saint-Philippe in 2002. Today, the site boasts a secondary school, a vocational high school, a horticultural high school, two apprenticeship training units, a boarding school, a social children's home, a day care center and an emergency reception service. It welcomes, trains, educates and integrates almost 600 young people in difficulty, continuing the work begun by the Duchess of Galliera 131 years ago.

Space is rented out for the benefit of the young people accommodated.

### CONSTRUCTION PERIOD

XIXth Century

### REMARKABLE ARCHITECTURAL

Fireplace, Stained-glass windows

### ELEMENTS

### MATERIALS

interior floor : Wooden floor

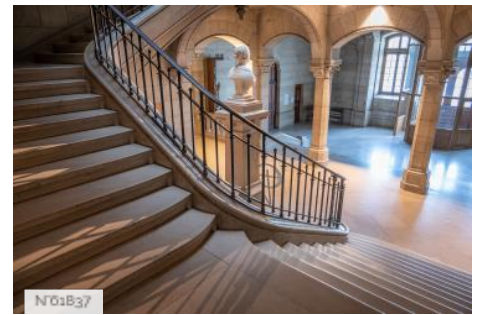
## Sibling locations



Saint Philippe Educationnal village - Chapel



Saint Philippe Educationnal village - Chateau entrance hall



Saint Philippe Educationnal village - Staircase of honor



Saint Philippe Educationnal village - Cellars and undergounds



Saint Philippe Educationnal village - Jules Verne Hall



Saint Philippe Educationnal village - Courtyard



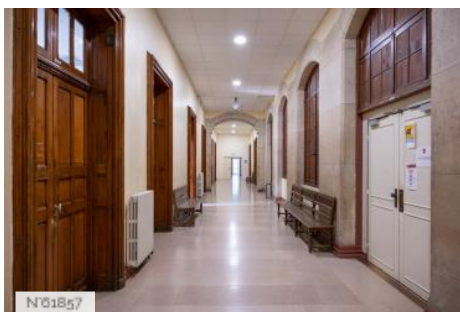
Saint Philippe Educationnal village - Courtyard with basketball hoop



Saint Philippe Educationnal village - Cultural activities office



Saint Philippe Educationnal village - Staircase



Saint Philippe Educationnal village - Corridor



Saint Philippe Educationnal village - Classroom



Village éducatif Saint-Philippe - Outdoors



Village éducatif Saint-Philippe - Garden



Village éducatif Saint-Philippe - Cour du prieuré

## Related locations



Saint Philippe Educationnal village - Chapel



Saint Philippe Educationnal village - Chateau entrance hall



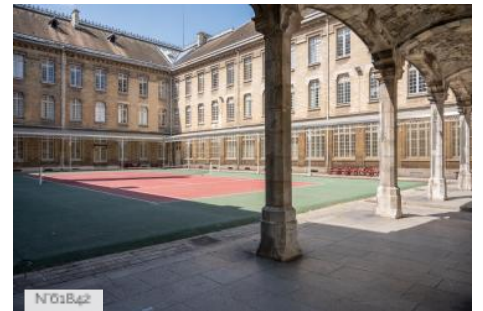
Saint Philippe Educationnal village - Staircase of honor



Saint Philippe Educationnal village - Cellars and undergrounds



Saint Philippe Educationnal village - Jules Verne Hall



Saint Philippe Educationnal village - Courtyard



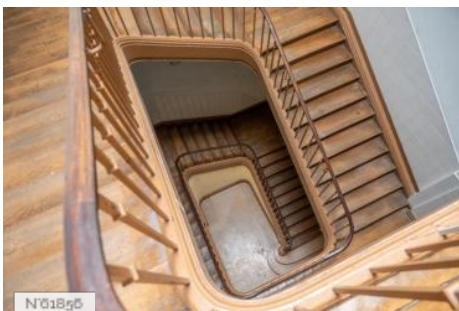
Saint Philippe Educationnal village - Courtyard with basketball hoop



Saint Philippe Educationnal village - Rodin Hall



Saint Philippe Educationnal village - Cultural activities office



Saint Philippe Educationnal village - Staircase



Saint Philippe Educationnal village - Corridor



Saint Philippe Educationnal village - Classroom