



Location pre-spotted by Film France network

Geolocation

N°61804

updated: 07/26/2005

Château de Vaux-le-Vicomte - Bedroom Louis XVI style

**77950 Maincy
France**

Contact the commission

Film Paris Region, Ile-de-France Film Commission



WWW.FILMFRANCE.NET

Credits: Commission du Film IDF
Caption:



WWW.FILMFRANCE.NET

Credits: Commission du Film IDF
Caption:



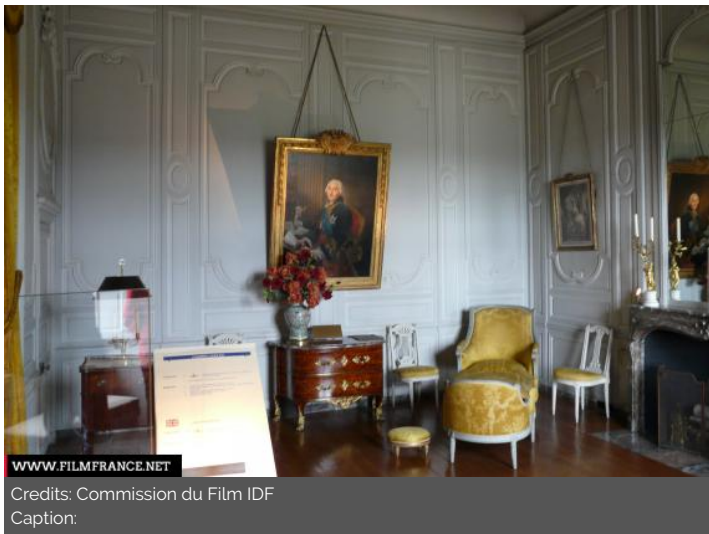
WWW.FILMFRANCE.NET

Credits: Commission du Film IDF
Caption:



WWW.FILMFRANCE.NET

Credits: Commission du Film IDF
Caption:



WWW.FILMFRANCE.NET

Credits: Commission du Film IDF
Caption:

LOCATION TYPE

CATEGORIES

Castle Drawing room

ENVIRONMENT

Forest, Park or garden

GENERAL PRESENTATION

LOCATION CONDITION TYPE

Restored or Renovated, Well maintained

LOCATION HISTORY

The Château de Vaux-le-Vicomte is a baroque French château located in Maincy, near Melun, 55 km southeast of Paris in the Seine-et-Marne département of France. It was built from 1658 to 1661 for Nicolas Fouquet, the superintendent of finances of Louis XIV.

The château was in many ways the most influential work built in Europe in the mid-17th century and the most elaborate and grand house built in France after the Château de Maisons. At Vaux-le-Vicomte, the architect Louis Le Vau, the landscape architect André le Nôtre, and the painter-decorator Charles Le Brun worked together on a large-scale project for the first time. Their collaboration marked the beginning of a new order: the magnificent manner that is associated with the Louis XIV style involving a system of collective work, which could be applied to the structure, its interiors and works of art and the creation of an entire landscape. The garden's use of a baroque axis that extends to infinity is an example of this style.

CONSTRUCTION PERIOD

XVIIth Century, XVIIIth Century

SPECIFIC STYLES

Covered - Indoor

REMARKABLE ARCHITECTURAL

Bedroom, Clock, Fireplace

ELEMENTS

Related locations



Château de Vaux-le-Vicomte - Great bedroom



Château de Vaux-le-Vicomte - Games room



Château de Vaux-le-Vicomte - Bedroom of the Muses



Château de Vaux-le-Vicomte - Hercules dining room



Château de Vaux-le-Vicomte - Library



Château de Vaux-le-Vicomte - King's office



Château de Vaux-le-Vicomte - Bathroom



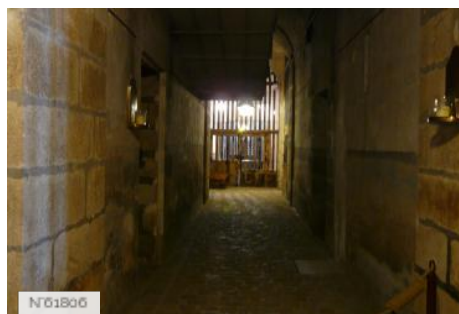
Château de Vaux-le-Vicomte - Friends of Vaux-le-Vicomte room



Château de Vaux-le-Vicomte - Bedroom Louis XVI style



Château de Vaux-le-Vicomte - Bedroom Louis XV style



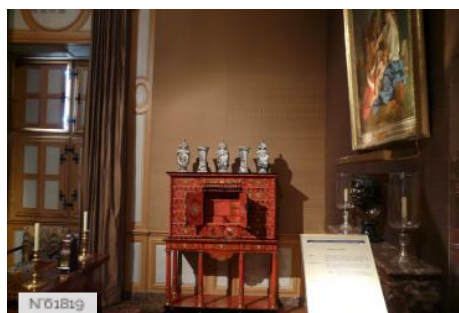
Château de Vaux-le-Vicomte - Kitchen



Château de Vaux-le-Vicomte - Madame Fouquet's office



Château de Vaux-le-Vicomte - Fouquet's bedroom



Château de Vaux-le-Vicomte - Nicolas Fouquet's office



Château de Vaux-le-Vicomte - Anteroom



N°1898

Château de Vaux-le-Vicomte - Gardens à la française



N°1899

Château de Vaux-le-Vicomte - Exteriors



N°1900

Château de Vaux-le-Vicomte - Alexandre grove



N°1901

Château de Vaux-le-Vicomte - Confessional ou grotte sèche



N°1902

Château de Vaux-le-Vicomte - Canal



N°1903

Château de Vaux-le-Vicomte - Kitchen garden



N°1904

Château de Vaux-le-Vicomte - Grottos and terrace