



Location pre-spotted by Film France network

Geolocation

N°54169

Location linked to [Institut National de Jeunes Sourds -](#)

[Global information](#)

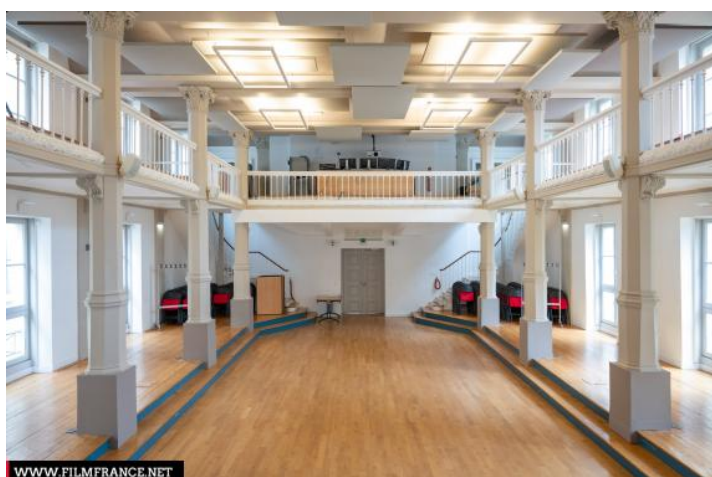
updated: 05/05/2023

## Institut National de Jeunes Sourds - Film Theater

**75005 Paris  
France**

Contact the commission

[Film Paris Region, Ile-de-France Film Commission](#)



WWW.FILMFRANCE.NET

Credits: Film Paris Region- Luc Detours

Caption: Institut National des Jeunes Sourds- Salle Abbé de l'Épée



WWW.FILMFRANCE.NET

Credits: Film Paris Region- Luc Detours

Caption: Institut National des Jeunes Sourds- Salle Abbé de l'Épée



WWW.FILMFRANCE.NET

Credits: Film Paris Region- Luc Detours

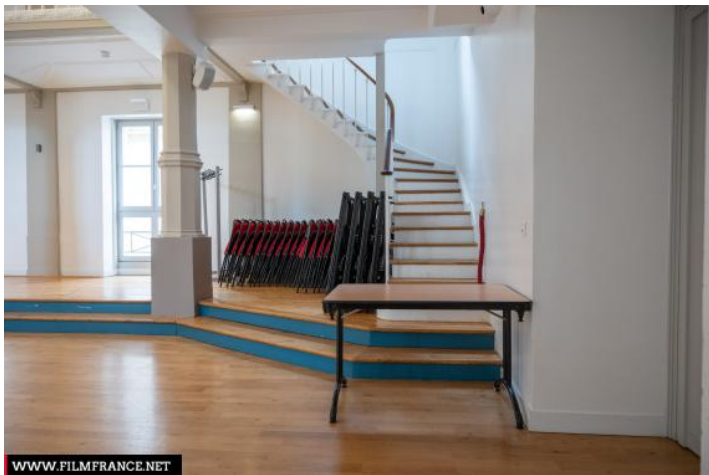
Caption: Institut National des Jeunes Sourds- Salle Abbé de l'Epée



WWW.FILMFRANCE.NET

Credits: Film Paris Region- Luc Detours

Caption: Institut National des Jeunes Sourds- Salle Abbé de l'Epée



WWW.FILMFRANCE.NET

Credits: Film Paris Region- Luc Detours

Caption: Institut National des Jeunes Sourds- Salle Abbé de l'Epée

## LOCATION TYPE

CATEGORIES

Room

Ballroom

Reception hall

Meeting room

Performance hall

Village hall

Theater

ENVIRONMENT

City

## GENERAL PRESENTATION

**The Institut National de Jeunes Sourds is a French special education school for young deaf people. It consists of several buildings dating from the 17th and 19th centuries, as well as a modern building.**

LOCATION CONDITION TYPE

Well maintained, Restored or Renovated

LOCATION HISTORY

Originally, the Institution des Sourds de naissance was created under the Constituante, by the law of July 21 and 29, 1791. Its purpose was to continue the philanthropic work of Abbé Charles-Michel de l'Epée (1712-1789). This law honored this benefactor by adding his name to the list of citizens who have merited the Patria.

The INJS aims at social and professional integration, but also at personal development and learning of communication methods for young deaf people. It is a national public institution; it teaches from kindergarten to high school, has a boarding school and practices an adapted pedagogy.

SPECIFIC STYLES

Some areas of the original building are classified as historical monuments.

REMARKABLE ARCHITECTURAL

Corbelled

ELEMENTS

Balcony, Stairs (monumental), Gallery (architecture)

## Sibling locations



Institut National de Jeunes Sourds - Small staircase of honour



Institut National de Jeunes Sourds - Canteen



Institut National de Jeunes Sourds - Laurent Clerc room



Institut National de Jeunes Sourds - Director's office



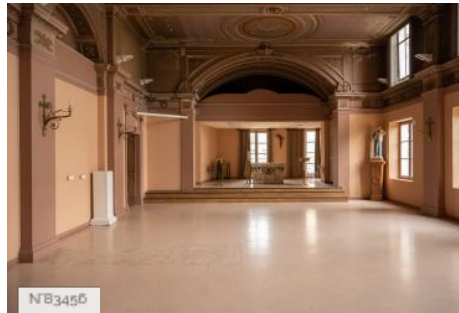
Institut National de Jeunes Sourds - Garden



Institut National de Jeunes Sourds - Grand Staircase



Institut National de Jeunes Sourds - Infirmary



Institut National de Jeunes Sourds - Chapel



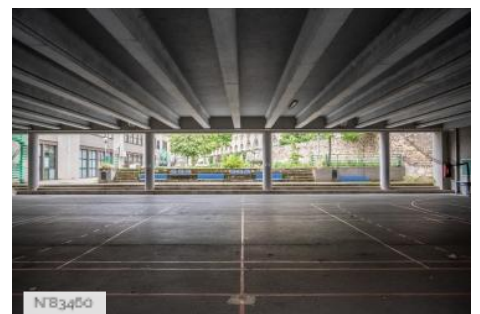
Institut National de Jeunes Sourds - Boarding school



Institut National de Jeunes Sourds - Modern building - Corridor



Institut National de Jeunes Sourds - Carpentry



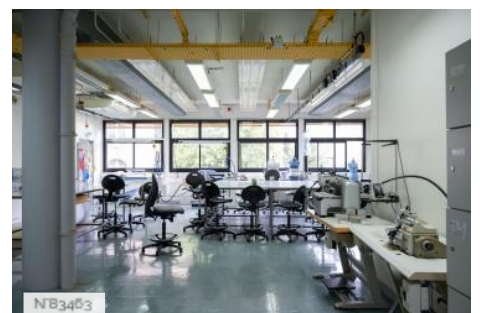
Institut National de Jeunes Sourds - Soccer field



Institut National de Jeunes Sourds - Gymnasium



Institut National de Jeunes Sourds - Hairdressing salon



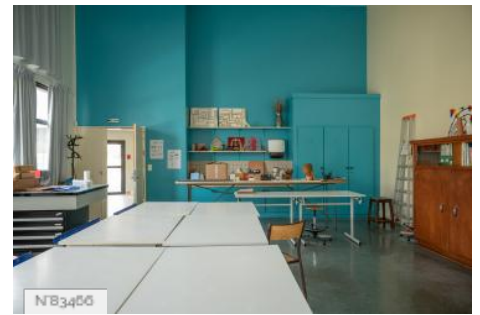
Institut National de Jeunes Sourds - Sewing workshop



N83454  
Institut National de Jeunes Sourds - dental prosthesis workshop



N83455  
Institut National de Jeunes Sourds - Music room



N83456  
Institut National de Jeunes Sourds - Beaux-Arts room



N83457  
Institut National de Jeunes Sourds - Class rooms



N83458  
Institut National de Jeunes Sourds - Media library



N83459  
Institut National de Jeunes Sourds - Rooms



N83460  
Institut National de Jeunes Sourds - Cour d'honneur

---

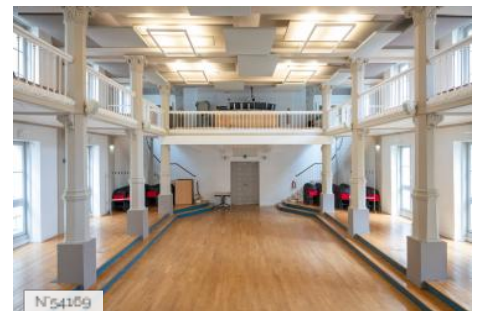
## Related locations



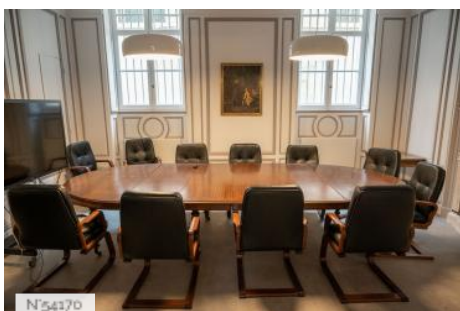
N54157  
Institut National de Jeunes Sourds - Small staircase of honour



N54158  
Institut National de Jeunes Sourds - Canteen



N54159  
Institut National de Jeunes Sourds - Film Theater



N54170  
Institut National de Jeunes Sourds - Laurent Clerc room



N54154  
Institut National de Jeunes Sourds - Director's office



N54155  
Institut National de Jeunes Sourds - Garden

