



Location pre-spotted by Film France network

Geolocation

N°50148

updated: 07/04/2022

Musée Gustave Moreau - first studio

75009 Paris
France

Contact the commission

[Film Paris Region, Ile-de-France Film Commission](#)



WWW.FILMFRANCE.NET

Credits: Musée Gustave Moreau - Jean-Yves Lacôte
Caption: Musée Gustave Moreau - Ateliers et salles d'exposition



WWW.FILMFRANCE.NET

Credits: Musée Gustave Moreau - Jean-Yves Lacôte
Caption: Musée Gustave Moreau - Ateliers et salles d'exposition



WWW.FILMFRANCE.NET

Credits: Musée Gustave Moreau - Jean-Yves Lacôte
Caption: Musée Gustave Moreau - Ateliers et salles d'exposition



WWW.FILMFRANCE.NET

Credits: Musée Gustave Moreau - Jean-Yves Lacôte
Caption: Musée Gustave Moreau - Ateliers et salles d'exposition



WWW.FILMFRANCE.NET

Credits: Musée Gustave Moreau - Jean-Yves Lacôte
Caption: Musée Gustave Moreau - Ateliers et salles d'exposition

LOCATION TYPE

CATEGORIES

Artist workshop Escalier Art gallery Museum Art museum Room

ENVIRONMENT

City

GENERAL PRESENTATION

LOCATION CONDITION TYPE

Well maintained

LOCATION HISTORY

The Musée Gustave Moreau was officially inaugurated in 1903 by the President of the Republic. Gustave Moreau was aware of the importance of transmitting his work to the future generations. In 1895, he has built the studios above the family house and organizes them as a museum.

CONSTRUCTION PERIOD

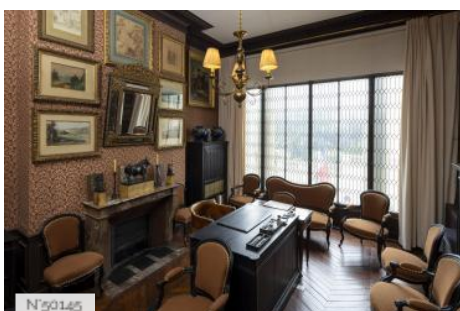
XIXth Century

REMARKABLE ARCHITECTURAL

Stairs (monumental)

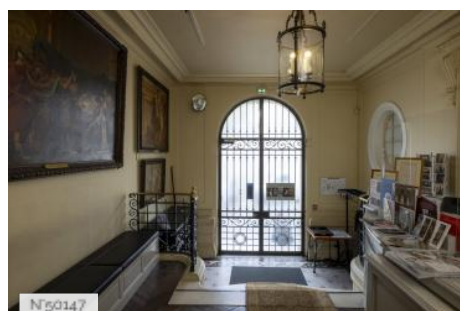
ELEMENTS

Related locations



N°50146

Musée Gustave Moreau - Cabinet de réception



N°50147

Musée Gustave Moreau - second studio

