



Location pre-spotted by Film France network

Geolocation

N°49279
updated: 02/09/2006

Ménagerie de Verre - Corridor

75011 Paris
France

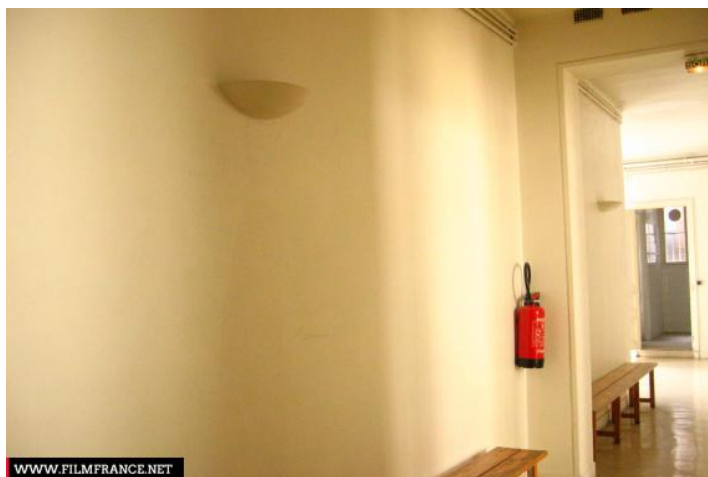
Contact the commission

[Film Paris Region, Ile-de-France Film Commission](#)



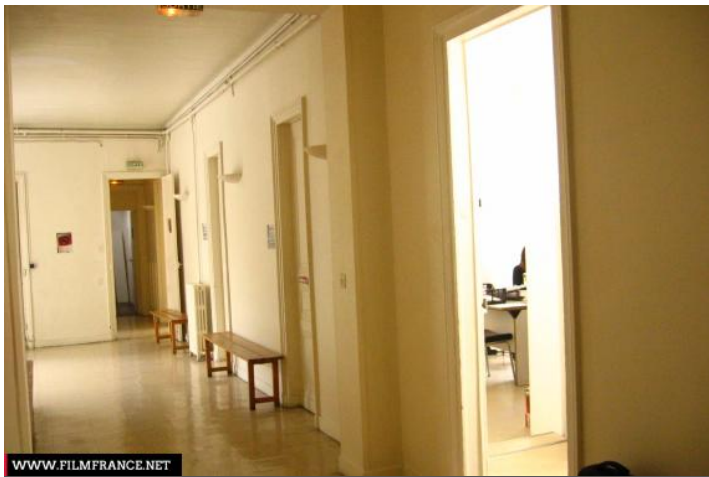
WWW.FILMFRANCE.NET

Credits: Constance Cardon/Commission du Film IDF
Caption:



WWW.FILMFRANCE.NET

Credits: Constance Cardon/Commission du Film IDF
Caption:



WWW.FILMFRANCE.NET

Credits: Constance Cardon/Commission du Film IDF
Caption:

LOCATION TYPE

CATEGORIES

Room Cultural building Cultural site Residential site Cultural edifice Arts center Art complex

ENVIRONMENT

City

GENERAL PRESENTATION

LOCATION CONDITION TYPE

Well maintained

LOCATION HISTORY

Ménagerie de Verre is a multidisciplinary place dedicated to contemporary creation. Since its creation in 1983, the Ménagerie de Verre is a real laboratory for theater and dance, and supports artists .

This 2000 square meters former printing house has been rehabilitated into a luminous spot ideal for shootings, shots...

CONSTRUCTION PERIOD

1971-1980

DOMINANT STYLE

Contemporary

SPECIFIC STYLES

Covered - Indoor

REMARKABLE ARCHITECTURAL

Corridor

ELEMENTS

Related locations



N°49278

Ménagerie de Verre - Cellar



N°49279

Ménagerie de Verre - Corridor