

Location pre-spotted by Film France network

Geolocation

N°54154

updated: 04/26/2022

BNF Site François Mitterrand - Belvedere

**75013 Paris
France**

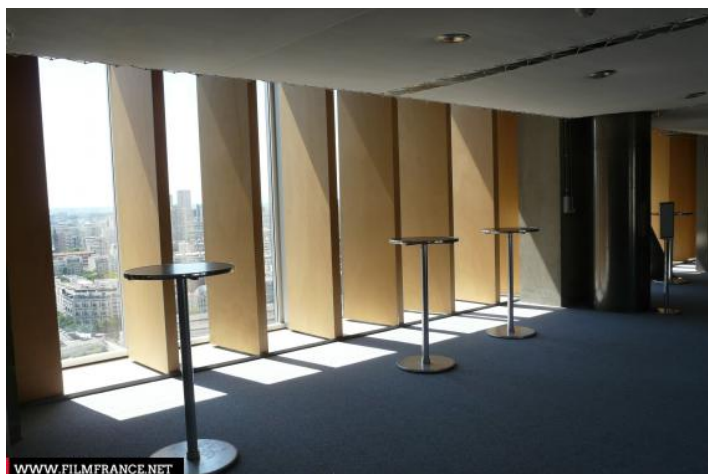
Contact the commission

[Film Paris Region, Ile-de-France Film Commission](#)



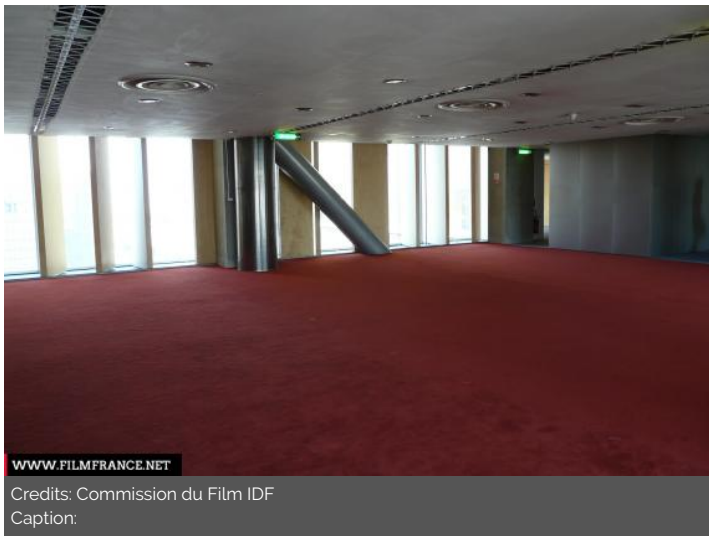
WWW.FILMFRANCE.NET

Credits: Commission du Film IDF
Caption:



WWW.FILMFRANCE.NET

Credits: Commission du Film IDF
Caption:



LOCATION TYPE

CATEGORIES

Belvedere Offices Viewpoint Room Lecture room Reception hall Meeting room

ENVIRONMENT

City

GENERAL PRESENTATION

LOCATION CONDITION TYPE

Well maintained

LOCATION HISTORY

In July 1988, President François Mitterrand announced the creation of a new library which should be the biggest and most modern in the world. The project suggested by Dominique Perrault was chosen by an international jury - chaired by the architect I.M. Pei - and approved by the President in August 1989. The works began in 1990 and lasted eight years.

CONSTRUCTION PERIOD

1991-2000

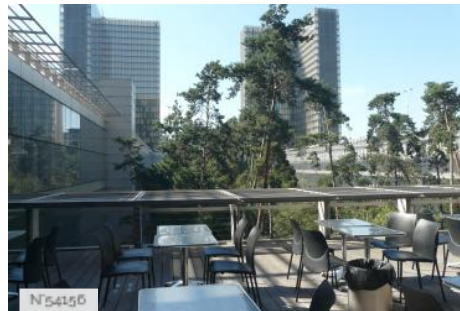
DOMINANT STYLE

Contemporary

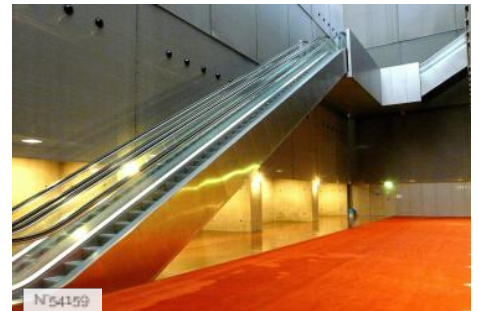
Related locations



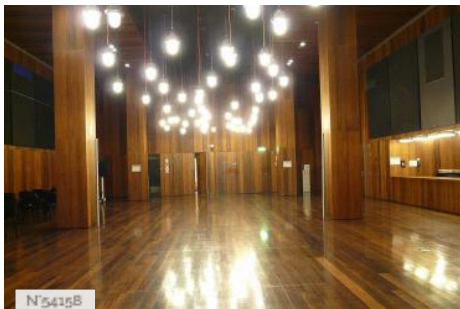
BNF - Site François Mitterrand - Building



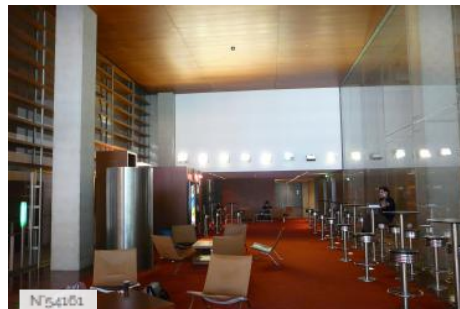
BNF Site François Mitterrand - Global information



BNF Site François Mitterrand - Pied de tour



BNF Site François Mitterrand - Small and Large public studio



BNF Site François Mitterrand - Reading room



BNF Site François Mitterrand - Library's terrace